



THOMAS
MORE | UNIVERSITY
OF APPLIED
SCIENCES

Welcome
to Belgium,
welcome to
Thomas More

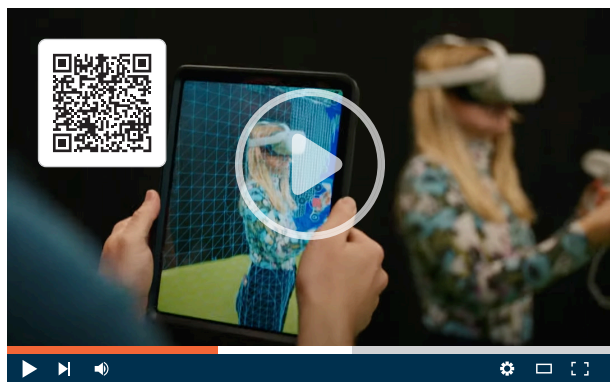
Where it Happens.

Thomas More is the largest university of applied sciences in Flanders, Belgium. The English-taught programmes attract students from all over the world, giving the campuses and programmes a vibrant international character.

As a pioneer in the 'learning by doing' method, we offer students tailored learning through our innovative labs, hands-on course methodology and real-world project opportunities.

Over 250 researchers conduct outstanding practice-oriented research with impact for businesses and society. We are strategic partner for numerous large and small companies, institutions and organisations in the wider region and far beyond.

Discover
more in our
videozone!



“ Located in the heart of Europe between Brussels, Amsterdam, Paris and London.

8 fields of expertise

- Business, Organisation & Tourism
- Design & Construction
- Education
- Health & Care
- Life Sciences & Chemistry
- Media & Communication
- Sport
- Technology & ICT

English Degree Programmes

We offer a range of inspiring English-taught international degree programmes giving (foreign) students with high ambitions access to our top-quality education.



Bachelors

Business, Organisation & Tourism

- International Business Management
- International Tourism and Leisure

Health & Care

- Orthopaedic Technology

Media & Communication

- Information Management and Multimedia
- International Communication and Media
- International Journalism
- International Media and Entertainment Business

Technology & ICT

- Applied Computer Science
- Automotive Technology
- Electronics-ICT



Postgraduates and microdegrees

- Microdegree Esports Manager
- Postgraduate African Business Studies
- Postgraduate International Teacher
- Postgraduate Orthopaedic Technology
- Postgraduate Pharma and Healthcare Logistics
- Postgraduate Space and Service Design



Your degree, your choice!

Choose from one of Thomas More's many competitive degree programmes, taught in English. Whether you're looking for a classic 3-year bachelor's degree or an abridged 1-year degree, we've got you covered!

Bachelor's degree: full-degree programmes (6 semesters) consisting of thorough theoretical knowledge, practical application and preparation for a professional career.

Abridged bachelor's degree: these short programmes allow you to obtain a second bachelor's degree in one year (2 semesters).

Postgraduates and microdegrees: graduated? Expand your knowledge and skills acquired in your bachelor's or master's degree. Earn a postgraduate in 2 semesters.

 www.thomasmore.be/en/welcome

Exchange Programmes

Discover more than 40 English-taught exchange programmes! We welcome exchange students from our partner universities around the globe to study or do an internship.

Thomas More promotes the 'spread your wings' model, by which every student acquires international-intercultural competences and sharpens their international professional knowledge. This model is aligned with partner's vision on internationalisation to find the best type of mobility that will help achieve our common goals.

Thomas More is a comprehensive university of applied sciences that offers a wide range of disciplines with a broad global network.

Next to faculty-led international partnerships, Thomas More values partnerships at the institutional level, which boost **multidisciplinary in teaching**.

Enhancing the scope and depth of learning, multidisciplinary brings forth many opportunities. Thomas More offers a multi-disciplinary semester in English as an exchange programme open to students of various disciplines.

We invite our international partners to become part of the Thomas More international ecosystem and enjoy the benefits of **our inclusive and multidisciplinary community**.



Internationalisation@home

- Buddies
- Co-learning with international students & staff
- COIL – Collaborative Online International Learning
- BIP – Blended Intensive Programmes
- Service-learning courses



Short-term mobility

- Mobility up to a month
- BIP - Blended Intensive Programmes



Credit mobility

- Few months/semester/year abroad
- Traineeship



Degree mobility

- Double degree
- Joint degree
- Flow to a master abroad



Areas of expertise!

We conduct research in four multidisciplinary areas of expertise to address the challenges businesses, organisations, governments and society face, and to provide them with innovative solutions. Thomas More has seven centres of expertise, each of which focus on a specific field.

Research

At Thomas More we conduct practice-oriented scientific research. Every day, our 250 researchers combine scientific expertise with practical knowledge and experience to provide evidence-based solutions and innovations for the largest and most urgent societal challenges. Our research is multidisciplinary by nature, combining knowledge from different domains and disciplines.



Creating **impact and innovation** for and with professionals and the wider society



Contributing to a worldwide **culture of knowledge**



Transfer of new knowledge to educational programmes, educating thousands of students each year to be state-of-the-art professionals

Focus and a selection of our research topics

Caring and inclusive society

- Technology for (mental) health and care
- Inclusion, prevention and community based care
- Assessment and screening
- Budget and financial welfare
- International living lab research

Climate and sustainability

- Sustainable biomass and chemistry
- Sustainable energy in buildings and greenhouse horticulture
- Sustainable design and manufacturing
- Future mobility
- Circular business

Technological and digital innovation

- Digital storytelling
- Extended reality
- Embedded and ICT systems
- Applied AI

Education and learning

- Effective teaching

Contact

Degree programmes

Admissions:

admissions@thomasmore.be

General Information:

international.support@thomasmore.be

Programme Manager:

annik.schellens@thomasmore.be

www.thomasmore.be/en/degrees

Exchange programmes

Head of International Office:

inge.vervoort@thomasmore.be

www.thomasmore.be/en/exchange

Research

Research Managers:

joan.deboeck@thomasmore.be

marijke.lemal@thomasmore.be

Save the date

International Days | 18 - 22 March 2024



22,000
STUDENTS



2,200
STAFF MEMBERS



1,000
STUDENTS GOING
ABROAD



7
CENTRES OF
EXPERTISE



250
RESEARCHERS



12
CAMPUSES